

Skylar Neilson



Photography



Table of Contents

Photography

<i>Past Photos</i>	2
<i>Portraits</i>	3
<i>Color Study</i>	4
<i>Fauna & Flora</i>	6
<i>Panaramic</i>	8
<i>Bannack Best</i>	10

Editing

<i>Cutouts</i>	12
<i>Blends and Types</i>	14
<i>HDR</i>	16
<i>Enhancements</i>	18
<i>Edge Effects</i>	19
<i>Raw Edit</i>	20

Past Photos



Portraits

Portraits are not my strongest area of photography, but I do enjoy going out and taking images of people. These images below were taken in the garden on campus both at night and in the day light sundown and after being taken I edited them in photoshop using the sharpening, brightening/ contrast levels and adjustment levels to fine edit the images.



Color Study



These photos were taken while the sun was going down as well as it being very windy. My goal for the assignment was to create photos with the same contrasting color which I thought I did a good job doing considering the elements that I found available to photograph. I wanted to have different focus points of the items so I put the f-stop at different ranges from low to high and focusing on the foreground. The color that I was shooting was the color green and with that I looked for different objects to shoot such as the green pipes and the grass and wooden painted logs.



Flora & Fauna



I took these images outside of my apartments and I thought the lighting really helped with the sun going down. I was lucky enough to take some images before it was completely gone but it made the images pretty warm. The morning images I took to shoot the birds I forgot to adjust the camera settings so for the last image I had to use photoshop to get the colors a little better along with the birds that were chilling in the tree above.



Panoramic Images



These images were both close to the temple, (top image) one at the top of the hill and the other on the opposite side of the temple near the soccer fields (bottom image). I really like how they came out even with all the photoshop that I put into the images. After I had merged the images together there were still lines that appeared on the image and so I decide that it was safe to use the stamp tool and make them blend in more with the non-cropped sides of the the merged images.

This process took a while but other than the merging and the stamp tool I did not edit anything more from the image. I was afraid that the rain was going to ruin parts of the images but I think I beat it with the merging of the images of any blemishes.



Bannack Best



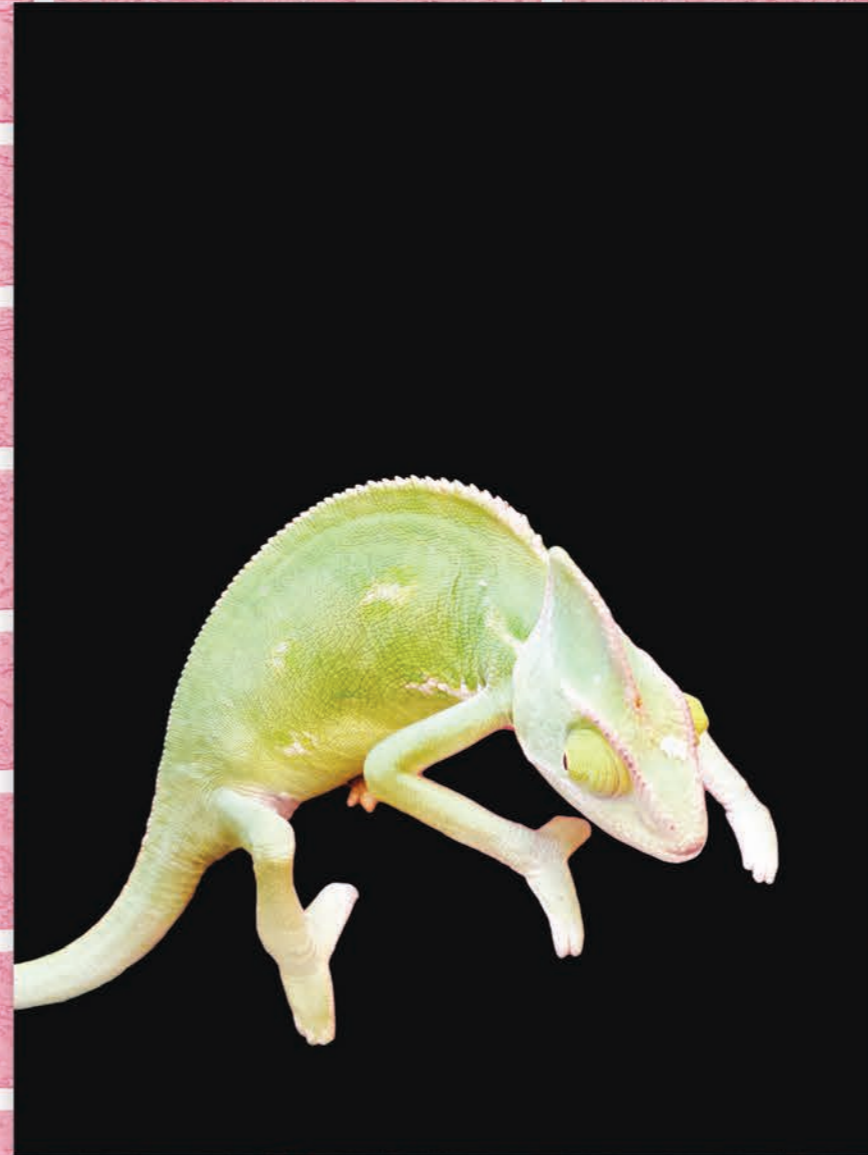
Cut Out Edit



Original



Partial Cut Out



Full Cut Out

The cut out project was one of my favorite and most useful projects that we had to do because with cutouts there are several companies and people that want cutouts of objects and things to use for projects and advertisements so it was a great thing to learn how to do for future employment with some design and photography work for companies.

In this project I took a photo that I took a few semesters before this class at a pet store as me and some friends found this awesome chameleon and I decided to take some pictures of it and it turned out perfect for this great fun assignment.

This project was all done with photoshop where I selected out only part of the chameleon and added a back black drop for the partial cut out using the selection tool and for the full cut out I used the selection tool to select out chameleon and blacked out the background.

To get the fine lines I had to use the selection tool and zoom in close to select the fine line that outlines the posed chameleon.

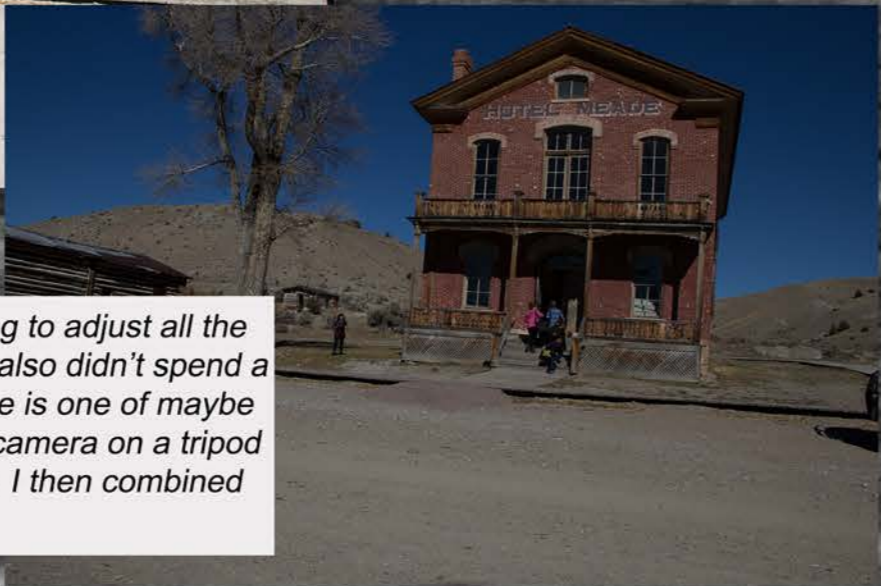
Blends & Type Edit



*The Sky is
the Limit*



HDR



The HDR image was a tough shot for me to figure out with having to adjust all the settings and things in order to get the right colors and framing. I also didn't spend a lot of time working with HDR configurations and this image above is one of maybe two images that I took in HDR. In order to get this shot I set my camera on a tripod and changed the settings to get the light and just snapped away. I then combined the images on the left to create this HDR image above.



Enhancements



Original



Edited

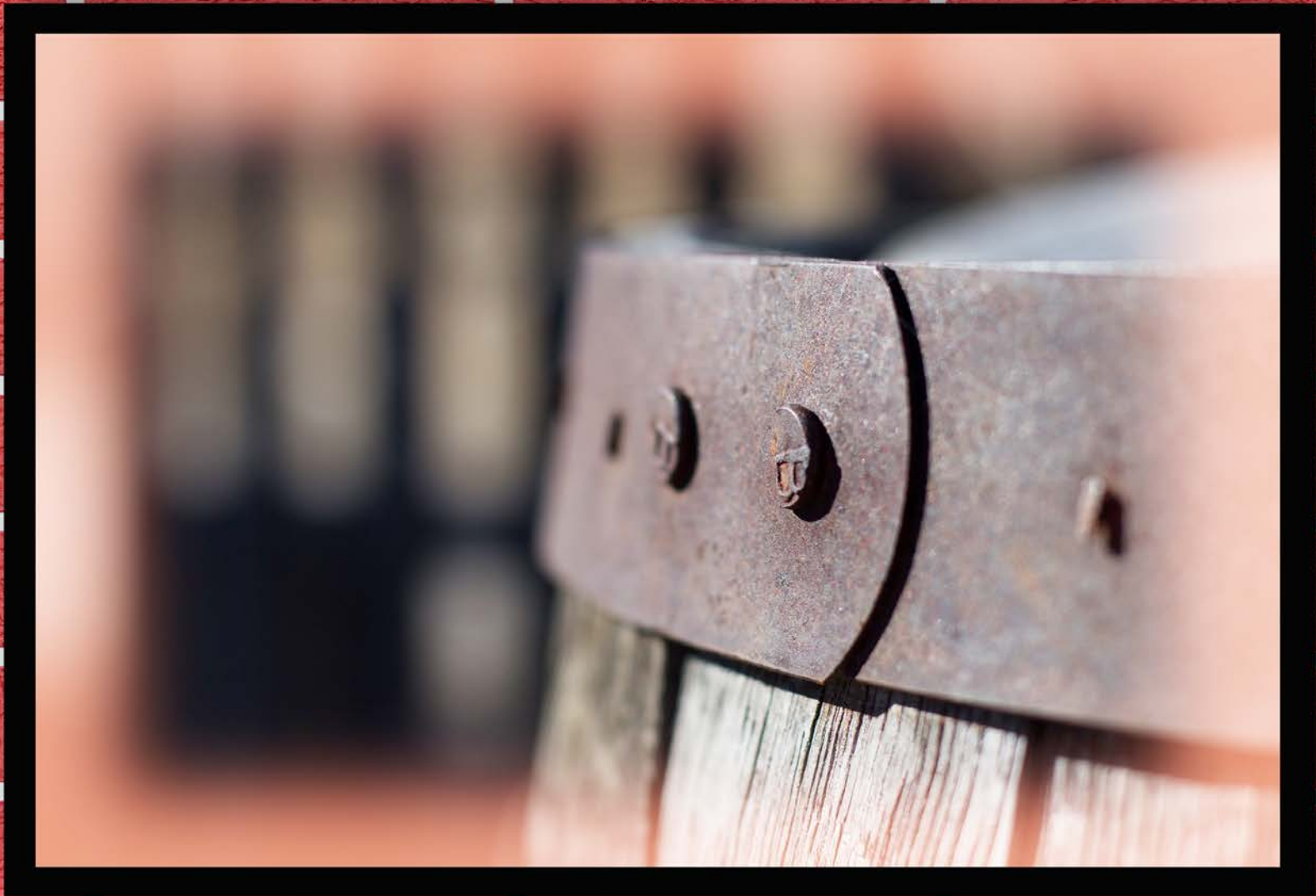
Edge Effects Edits





Raw Edit





Design By Skylar Neilson